



Steeple Morden Parish Newsletter May 2023

Editorial.

The events calendar for May seems very quiet to say that there is going to be a Coronation on May 6th. Perhaps everybody is waiting to see what the weather will throw at us around the Bank Holidays.

The Parish Council are going ahead with a planning application for a 20mph limit in the centre of the village. A good response was received from the survey. The full report can be found on the Steeple Morden Website. www.steeplemordenpc.org.uk

The Parish Council are pleased that the village broadband is being used, over 80 people had logged on in April. The EV charge units are also being put to good use.

Let's hope our village Coronation Celebrations has another good turnout like the Jubilee celebration, only with some warmer weather.

Desma

Events

April

Sat April 29th – 80's night GM (p14)

May

Mon May 1st – Fete, St Catherine's Litlington (p9)

Mon May 1st – Reach Fair – (p6)

Sun May 7 – 13th May – Ashwell Music Festival (p10)



SAT MAY 6TH – CORONATION

Sun May 7th – Coronation Celebration (p13)

Thurs May 11th - Wuthering Heights, GM Church (p14)

Thurs May 18th – WI – Talk – (p9)

Sat May 20th – May Miscellany (p10)

June

Fri June 9 – 11th - Blue Grass Festival (p13)

Editor

Desma Goddard Email: newsletter@steeplemordenpc.org.uk

**Steeple Morden Parish Council
List of Councillors as at May 2022**

CLLR Jeremy CLAYTON (Chair)
jeremy@steeplemordenpc.org.uk
01763 853855

CLLR Keith AUSTIN
kieth@steeplemordenpc.org.uk
01763 852023

CLLR Nick BADGER
nick@steeplemordenpc.org.uk
01763 852191

CLLR Malcolm BIRD
malcolm@steeplemordenpc.org.uk
01763 852469

CLLR Mark CARROLL
mark@steeplemordenpc.org.uk
07971 975146

CLLR Oliver PARSONS
oliver@steeplemordenpc.org.uk

CLLR Nicola SHARKEY
nicola@steeplemordenpc.org.uk

CLLR Sean TRAVERSE-HEALY
sean@steeplemordenpc.org.uk
01763 853843

CLLR Celia UPCHURCH
celia@steeplemordenpc.org.uk
01763 852193

DISTRICT CLLR MRS Heather WILLIAMS
cllr.williamsh@scambs.gov.uk
07885 774775

COUNTY CLLR MR Sebastian KINDERSLEY
skindersley@hotmail.com
01767 651982

Parish Council Website:
www.steeplemordenpc.org.uk



[GO TO WEBSITE](http://www.steeplemordenpc.org.uk)

Clerk to the PC: Sally Walmesley
clerk@steeplemordenpc.org.uk

Anthony Browne

I was glad to see so much support for our area by the national government, but I know many will feel let down by recent decisions from our local politicians. In my view, the County Council has made the wrong choice in voting against a Congestion Charge referendum and for a busway route that will flatten Coton Orchard. I'll continue fighting for the transport solutions we need in our area, including better links between Cambourne and Cambridge city.

Thanks to those who gave their views in my last newsletter on the Mayor's precept. Most of you disagree with this new tax. . This month, I am focusing on potholes. Do let me know what you think, or to report a particular problem pothole, answer the question below.

**QUESTION OF THE
MONTH**

***Do you think
Cambridgeshire County
Council should make
fixing potholes a
priority?***

YES NO

NEWS FROM YOUR PARISH COUNCIL

The meeting is listed every month in the Village Garage Shop window, on the Notice Board at the Recreation Ground, and in Odsey near the station. A copy of the full minutes from the Council Meetings may be obtained by contacting the Parish Clerk, Sally Walmesley, Redwood Lodge, South Street, Litlington, Royston SG8 0QR. Telephone 01763 852137 or e-mail clerk@steeplemordenpc.org.uk Minutes can also be viewed on the Steeple Morden Village Website www.steeplemordenpc.org.uk and at the Village Post Office.

Notes taken at the Parish Council Meeting held on 18th April at 7.00pm in the Steeple Morden Pavilion

County Councillor Sebastian Kindersley - reported that the plan for a Congestion Charge for Cambridge had received 42,000 replies, which are being accessed. The final outcome may be passed to the Government. The Coton Busway is also under discussion as the proposed route has not been well received, passing through a private orchard and a garden centre. Potholes were discussed; the SCC now has 5 'dragon-patches' and 20 manual teams, which process up to 500 potholes a day. Each pothole costs £42 to repair. Chairman Jeremy Clayton asked Cllr Kindersley to investigate if there was any possibility for Steeple Morden to mend its own potholes, which would be possibly cheaper and quicker.

Annual Parish Meeting - to be held on May 24th. - it was decided all reports received should be in written form. There will also be a presentation by the Woodland Trust about the Tween Town Woods project. It was also decided to have refreshments.

Recreation Ground/Conservation Area -Grasscutting contracts have been awarded.

Car Park Lights - the floodlights on the pole over the parking area were not receiving power, this has now been resolved.

CCTV Camera - which was not operating in night mode has been replaced with a higher resolution and a wider angle camera.

Parish Council Projects 2021/22 - Car Park refurbishment - ongoing

Pavilion/Reading Room Decoration - Cllr Nick Badger has been busy organising the various clubs to come along to speak about their aspirations, their interest in a new eco-efficient pavilion, what their requirements would be and how active can they be on gaining grants for funding. There seems to be strong enthusiasm from most of the clubs and lots of ideas for grant applications. We are talking to some helpful architects who might be able to help us (without charge) in the early stages of our thinking. Cllr Traverse-Healy has given some thought and some initial ideas for the siting of a new facility and its outline shape. This is useful as a grounding for the discussions with the clubs. A further update will be forthcoming at the AGM.

20s Plenty Initiative - 20 MPH Funding: The Parish Council has agreed to submit an application for a 20mph zone in the village The SCC expect to fund just eight individual schemes per year. The 20mph application window closes at 5pm on Sunday 30 April 2023. Evidence gathered from the survey shows the support of the village with 125 returns collected.

The full planning application for the 20mph can be viewed on the website, www.steeplemordenpc.org.uk.

Broadband Link for Church – discussion was held as to how the village broadband could be linked to the Church.

Planning/Tree Work Applications -

Planning Ref 23/01266/HFUL

26 Hay Street - Removal of brick boundary wall to front of property, car port and shed. Construct a new brick garage. APPROVED.

Correspondence – the Head Mistress of SM Primary School contacted the Parish Council to ask whether the Parish Council were going to provide Coronation mementos for the school. A discussion was held and it was decided to provide Coronation mementos for Steeple Morden/Odsey children, as it was made known that other Parish Councils in the area were providing mementos for their children. Cllr Nick Badger will be putting information on Facebook to allow parents to register their child to receive a memento. A message will be sent to the Head Mistress explaining the Parish Councils ideas.

The Next Parish Council Meeting will be the AGM on May 24th.



Public EV Charge points operational on Recreation Ground



The Parish Council is pleased to operate two EV Charge points on the Recreation Ground. These charge points are provided for public use by residents of Steeple Morden and for visitors to our village.

The pricing is currently 49p per kWh.

Please use responsibly:

- Do not park in the charging bays unless charging
- Please treat equipment with care and respect
- Check charge status and remove car quickly when charging complete
- Do not drive off tarmac area and chew up grass

If you have any queries about the EV Chargers in the village please email: webmaster@steeplemordenpc.org.uk



Steeple Morden Parish Litter Picks Schedule 2023

All events start at 2pm and last just 60 “magic” minutes

Zones 2-6	Whole village sweep <i>Meet by Parish Noticeboard on the rec</i>	Saturday 29 April 2023
Zone 1:	Odsey <i>Meet by Zaheer’s carpark</i>	Saturday 13 May 2023
Zone 1:	Odsey <i>Meet by Zaheer’s carpark</i>	Saturday 9 September 2023
Zones 2 and 3:	Cheney Street from Litlington Road to Brook End to include The Green Cheney Street from Brook End to Hay Street Junction to include Russell Close and Jubilee Way etc <i>Meet by the Litlington Road end of The Green</i>	Saturday 23 September 2023
Zones 4 and 5:	Station Road from allotments to Ashwell Road to include Ashwell Road and Windmill Close etc Station Road and Hay Street to Craft Way to include Craft Way <i>Meet by the Station Road and Ashwell Road intersection</i>	Saturday 7 October 2023
Zones 6 and 7:	Hay Street from Craft Way to Trap Road /North Brook End Trap Road/ Bogs Gap and Brook End <i>Meet by Parish Noticeboard on the rec</i>	Saturday 21 October 2023
Zones 2-6	Whole village sweep <i>Meet by Parish Noticeboard on the rec</i>	Saturday 11 November 2023
Zone 1:	Odsey <i>Meet by Zaheer’s carpark</i>	Saturday 25 November 2023

Please email SMLitterpick@yahoo.com with your full name and which of the events you can attend.



So a quick thank you to all who have turned out already this year to support the first few picks and it is always good to have new people joining 😊 - also the PC has agreed that we can buy some new hi-viz as the original vests are getting a bit tatty thanks to hungry mice and a few seem to have gone AWOL over the years.

Hopefully I will have them by the next pick on Saturday 29 April - whole village sweep meeting at the rec again - I will send a reminder out as usual a day or so beforehand.

Thanks again for supporting this initiative - I know it is greatly appreciated by your fellow parishioners.

Ginny

Share your views through Let's Talk

Complete our survey by 12 May



Please take a few minutes to fill in our survey and let us know what you think about our draft five-year plan for local health and care services. Complete the survey

via: <https://www.surveymonkey.co.uk/r/97SKD8H>



M. FLACK'S CHAIR CANING

Chair caning repairs and restorations based in Barley, Hertfordshire

All types of natural rattan caning on chairs, stools, sofa, drop ins etc...

Danish cord, rush seating, small upholstery items, drop ins, dining chairs, stools, cushions etc...

Millie Flack

Mobile: 07904 204 103

Email: m.flackschaircaning@gmail.com

: [m.flackschaircaning](https://www.instagram.com/m.flackschaircaning)

Reach Fair

By Royal Charter since 1201

Bank Holiday Monday

1 May 2023

12 noon to 5pm

Opened by the Mayor of Cambridge in a ceremony with ancient declarations and the throwing of pennies to the crowd

*Traditional Fairground * Maypole Dancing
Morris Men * Live Music
Dancing and Martial Arts Demonstration
Artisan and Craft Stalls * Bar * Food and Drink*

Entrance Free. Parking £9 per vehicle

www.reachfair.org.uk 

Fair Green, Reach CB25 0JD



PARISH PANTRY

Local Food Bank



Just a reminder that the Parish Pantry is in the porch of the church, should you have donations, or if you should be needing food.

If you are in a position to donate, items required are:

Tinned Meat, Pies, Veg, Potatoes & Fruit
Cereals
UHT Milk
Sugar
Flour
Pasta
Pasta sauces
Mug shots
Pot noodles
Individual wrapped cakes

Location:
St Peter & St Paul Church
Steeple Morden
SG8 0NJ



For more info:
Sam Carroll
07494 588663
sdcarroll849@gmail.com

GIVE WHEN YOU CAN, TAKE WHEN YOU NEED

Queens Jubilee Award 2022

An award presented by Steeple Morden Parish Council to a member of the community who has gone above and beyond in helping others.

The winner of the above award for 2022, amazingly is me, Desma Goddard,

20mph for Steeple Morden Centre – residents survey March 2023

The Parish Council will submit an application for a small 20mph zone to be implemented in the centre of Steeple Morden, after a positive response was received from the village.

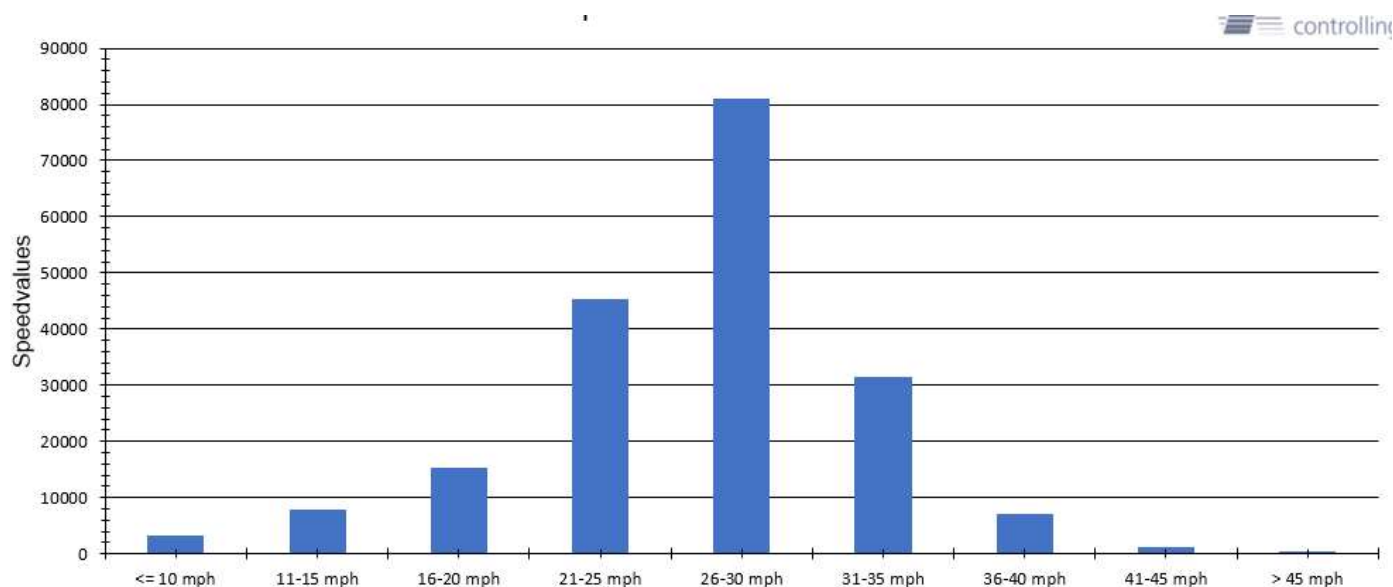
The proposed 20mph zone includes the entrances to the village primary school, a young nursery club, the recreation ground, the church, a pub and the local garage.

All these entrances are busy at times and create dangers for passing traffic. At certain times of the day there are many parents and school children milling around outside the school gates. The recreation ground introduces many vehicles, pedestrians and cyclists throughout the day and particularly at weekends. The garage has a constant stream of vehicles and pedestrians as it also houses a small shopping facility. The pub and church have their own times of activities for both pedestrians and vehicles.

Various ideas for calming the traffic have been discussed over the years as close misses and dangerous driving have been reported, however, it has not yet been possible to find a solution that meets with general approval within the village. The 20mph zone offers an approach to address the issue in this area and meets with good support from the community.

The focussed 20mph zone will increase safety for vulnerable highway users by making it clear that this central part of the village is a danger spot and a lower speed limit is applicable. It is hoped that the majority of drivers will take notice, slow down and take extra care. By focussing in on the area that has specific needs we hope that drivers will take action and not build up speed again before coming across the danger areas.

This graph shows the distribution of speeds along Hay Street in the proposed zone during 25 days of March 2023. Our records show that over these 25 days, over 34,000 vehicles passed along this one road in the proposed zone, outside the school and recreation ground. Of these 86% were travelling above 20mph.



**Saint Peter & Saint Paul Church
Steeple Morden
Dairy for May**
www.shingaychurches.co.uk

Sunday 7th May (Easter 5)

8.30am Prayerbook Communion

Sunday 14th May (Easter 6)

10.00am Group Communion - Guilden Morden

Sunday 21st May (Easter 7)

9.45 am Family Service

Sunday 28th May (Pentecost)

10.30am Group Communion & Baptism

Sunday 4th June

8.30am Holy Communion - Wendy

**9.45am Prayerbook Communion – Abington
Pigotts**

10.00am Family Service Guilden Morden

**PB. Check Church Notice Boards for any changes
in services or times.**

And Tuesdays

Morning Prayer at Litlington Church,
10:00am

- 2nd May
- 9th May
- 16th May
- 23rd May
- 30th May



followed by tea, coffee, and
biscuits.

Come, join and have a chat.

Café Church

**Cafe Church will be open from 9am
on the following Fridays –
5th, 12th, 19th, & 26th May
Everyone is welcome for
tea, coffee, home-made cakes,
toys for the children
and chat**

**Guilden Morden Congregational Church
Diary for May**

www.guildenmordencongregationalchurch.org

Following the fire in the Chapel in January we are pleased to announce that the last area to be restored, the kitchen, should be fully functional again by the middle of May.

Tuesday 2nd May **14.00pm** COGS in Village Hall

Wed 3rd May **9.00 – 11.00am** Baby and Toddlers Group in Village Hall

Sunday 7th May **10.30am** Café style service. Come and join us for croissants and coffee in our relaxed style of worship. All welcome.

Monday 8th May **10.30am** Men's Guild in schoolroom

Wed 10th May **9.00 – 11.00am** Baby and Toddlers Group

Sunday 14th May **11.00am** Joint service at Litlington

Wed 17th May **9.00 – 11.00am** Baby and Toddlers Group

Sunday 21st May **10.30am** Joint service with St Mary's at the Chapel

Wed 24th May **9.00 – 11.00am** Baby and Toddlers Group

Sunday 28th May **10.30am** Communion Service with Litlington at the Chapel

Other group meetings:

Bridge Club Mondays at 19.30pm (schoolroom)

Knit and Natter Alternate Tuesdays at 10am (location TBA)

Local History Group Wednesday 3rd May at SM village Hall

Film Club Friday 19th May (in schoolroom)

Home group Zoom meetings Tuesdays 20.00pm ,

Contact Amanda for details

ajenieman@gmail.com

Anyone wishing to book the rooms for social activities contact Gerry Watkins 01763 852869



The Mordens WI

We are a small friendly group of ladies meeting on the third Thursday of the month, usually in Guilden Morden Village Hall at 7.30pm

We have a wide range of activities to choose from and interesting speakers throughout the year.

May 18th – Peter Furmston will tell us about ‘The Cosmetics Business’

If you would like to join us or to know more about The Mordens WI, please contact Joyce on 01763 852087. Transport can be arranged



Steeple Morden Bowls Club. (Situated behind the Village Hall)

This year SMBC celebrates 75 years of bowling in Steeple Morden.

For those of you who do not know where we are, we are directly behind the Village Hall. We did not start here, the original site was in Cheyney Street across the road from the house that is now next to the garage and was then the Bell Public House and Steeple Morden Bowls Club officially commenced in 1948.

We then moved over to where we are now and we opened the first part of our pavilion on the 3rd June 1972 opened by Mrs P M South with our President Stan Izzard who is no longer with us. We then opened a further new extension to our pavilion in 1991 with again Stan Izzard and Roy Peacock the Vice President of the England Bowls Association. Then in 1995 the new green to go with the new pavilion was officially opened.

We currently have about 40 members some of which are just social members and some 30 bowlers and we are always on the lookout for new bowlers of all ages.

If you are interested just turn up on a Monday or Tuesday morning when members roll up using short mats in the club house we have woods of all sizes and enough people to show you the basic techniques.

Our outdoor season starts in April and our coffee evening for signing on is the 12th April.

There are no age restrictions either young or old can play and please read the letter displayed on the notice board that explains what bowling can offer.

Our club house has a bar, so if you want a leisurely afternoon or evening in the summer sunshine pop along and a member can buy you a drink and watch a game of bowls.

80'S NIGHT

- RAISING MONEY FOR GILDEN MORDEN PRIMARY AND PRE SCHOOL!
- £10 A TICKET INCLUDES A FREE DRINK ON ARRIVAL!
- RAFFLE AND PRIZES!
- OVER 18.S ONLY
- AND SO MUCH MORE!

JOIN US AT GILDEN MORDEN VILLAGE HALL
29TH APRIL 7:30-11PM

BOOK NOW USING THE LINK - [HTTPS://WWW.TRYBOOKING.CO.UK/CEBG](https://www.trybooking.co.uk/CEBG)
OR EMAIL US GILDENMORDENPTFA@GMAIL.COM

St. Catherine's Litlington

Monday 1st May

Bank Holiday Fete

From 12.30pm

Bar BBQ

Fun for all

*The Friends of Steeple Morden Church
present*

‘May Miscellany’ A celebration in words and music

Musicians: Ros Holbrow and John Witchell

Singers: Robin Pegna and Danielle Young

Reader: Sarah Harrison

**Saturday May 20th 7.30pm
Steeple Morden Church
Doors open 6.45pm - Licensed Bar**

Tickets £12

Steeple Morden Shop

Sarah Harrison 07976657504 01763 853171

You'll be welcome as the flowers in May!



Free Wi-Fi around Recreation Ground buildings



The Parish Council runs a free Wi-Fi service in and around the buildings on the Recreation Ground. The Cricket Pavilion, the Reading Room, the Village Hall and the Bowls Club are all covered.

The Wi-Fi in these areas is provided free of charge for public use by residents of Steeple Morden and for visitors to our village.

- To use the Wi-Fi simply select the network SSID: SMPC_Community
- No password is required.
- Please use sensibly and responsibly.

If you have any problems send an email to: webmaster@steeplemordenpc.org.uk



7th - 13th May 2023

[Festal Evensong](#) / [Oliver Gearing](#) / [An invitation to an evening with Flanders and Swann \(with a few of their chums\)](#) / [Mainline Big Band](#) / [Dave Rance's Rockin' Chair Dance Band](#) / [Young Musician's Concert](#) / [Purcell & A Pint](#) / [UKELELE - Family Workshop](#) / [SKOOL ROOLZ](#)

Tickets available from www.ashwellmusicfesival.org.uk

The Mordens - Bassingbourn - Royston

Service 17

MONDAY TO SATURDAY

	Notes : NS				
Guilden Morden, Pound Green, opp Congregational Church	08:05	09:49	11:49	14:14	16:14
Guilden Morden, Fox Hill Road, Fox Corner	08:06	09:50	11:50	14:15	16:15
Steeple Morden, Hay Street, Craft Way	08:09	09:56	11:56	14:21	16:21
Litlington, Church Street, Silver Street	08:14	10:01	12:01	14:26	16:26
Bassingbourn, North End, Park View	08:19	10:06	12:06	14:31	16:31
Bassingbourn, High Street, opp South End	08:21	10:08	12:08	14:33	16:33
Bassingbourn, Old North Road, opp Cardiff Place	08:28	10:13	12:15	14:40	16:40
Whaddon, Church End, Bridge Street	08:31				
Whaddon, Church End, opp Bridge Street		10:15			
Meldreth, High Street, opp Manor Road		10:20			
Melbourn, Station Road, o/s Church		10:25			
Kneesworth, Old North Road, The Red Lion PH	08:34		12:17	14:42	16:42
Royston, North Road, Tesco	08:39	10:35	12:21	14:47	16:47
Royston, Gateway Retail Park	08:42	10:38	12:25	14:50	16:50
Royston, Kneesworth Street, Rail Station (Stop B)	08:45	10:42	12:28	14:53	16:53
Royston, Baldock Street, Morrisons	08:50	10:47	12:33	14:58	16:58
Royston, Bus Station	08:52	10:49	12:35	15:00	17:00

Royston - Bassingbourn - The Mordens

Service 17

MONDAY TO SATURDAY

	Notes :				
Royston, Bus Station	09:10	11:10	13:10	15:10	17:10
Royston, Baldock Street, Morrisons	09:12	11:12	13:12	15:12	17:12
Royston, Kneesworth Street, Rail Station (Stop A)	09:14	11:14	13:14	15:14	17:14
Royston, Gateway Retail Park	09:16	11:16	13:16	15:16	17:16
Royston, North Road, Tesco	09:21	11:21	13:21	15:21	17:21
Kneesworth, Old North Road, opp The Red Lion PH	09:23	11:23		15:23	17:23
Bassingbourn, Old North Road, opp Cardiff Place	R	R		R	R
Melbourn, Station Road, opp Church			13:26		
Meldreth, High Street, Manor Road			13:31		
Whaddon, Church End, Bridge Street			13:33		R
Bassingbourn, Old North Road, Cardiff Place			13:34		
Bassingbourn, High Street, South End	09:32	11:32	13:36	15:32	17:32
Bassingbourn, North End, Park View	09:34	11:34	13:38	15:34	17:34
Litlington, Church Street, opp Silver Street	09:38	11:38	13:42	15:38	17:38
Steeple Morden, Hay Street, opp Craft Way	09:42	11:42	13:46	15:42	17:42
Guilden Morden, Fox Hill Road, opp Fox Corner	09:45	11:45	13:49	15:45	17:45
Guilden Morden, Pound Green, opp Congregational Church	09:46	11:46	13:50	15:46	17:46

Note:

NS Monday to Friday only
R Stops on request

New Bus Service run by Myalls

Times are slightly different to the old 71 service. A laminated copy of the new bus times will be put in the Hay Street Bus Stop.



Steeple Morden Football Club

Fixtures

19/02/23	Steeple Morden Vets v Bluntisham Rangers
25/02/23	Steeple Morden 1 st v West Wrattling Res
04/03/23	Barrington 1 st v Steeple Morden 1 st
11/03/23	Foxton Reserves v Steeple Morden 1 st
12/03/23	Gamblingay United Vets v Steeple Morden Vets
18/03/23	Milton Reserves v Steeple Morden 1 st
26/03/23	Steeple Morden Vets v Bluntisham Rangers Vets
01/04/23	Cottenham United v Steeple Morden 1 st
02/04/23	Steeple Morden Vets v Ely Rangers Vets
05/04/23	Steeple Morden Vets v FC Kennett Vets
12/04/23	Steeple Morden 1 st v West Wrattling Res
16/04/23	Steeple Morden Vets v Ely Rangers Vets

Results

Won 3 - 1
Lost 0 - 1
Lost 2 - 1
Lost 5 - 4
Drew 1 - 1
Lost 2 - 1
H - W
Won 4 - 2
Lost 2 - 6
Lost 3 - 6

Steeple Morden Cricket Club CCA Junior 3 West

Steeple Morden Cricket Season starts with a friendly at the Isle of Wight club Ventnor on the 22nd April. Another friendly with Whaddon on 30th April. The first league match will be held at Steeple Morden on 8th May. After a very successful 2022 year SM Cricket Club are now in CCA Junior 3 West League.

Fixtures for 2023

22 nd April	Ventnor CC v Steeple Morden 1 st XI
30 th April	Steeple Morden 1sr XI v Whaddon
8 th May	Steeple Morden 1 st XI v Cottenham 11
13 th May	Cambourne v Steeple Morden 1 st XI
27 th May	Steeple Morden 1 st XI v Madingley
3 rd June	Steeple Morden 1 st XI v Cambourne
10 th June	Harlton v Steeple Morden 1 st XI
17 th June	Steeple Morden 1 st XI v Milton 111
24 th June	Steeple Morden 1 st XI v Stapleford
1 st July	Steeple Morden 1 st XI v Longstowe

All matches start at 1.00pm

Coronation Celebration!

Sunday 7th May

Steeple Morden
Recreation Ground
3pm to 10pm

Tea, Cake & Kiddies Craft Tent
Live Music, Food Stalls & Bar

Come and Join the celebrations!



POSTCARD

Coronation Celebration!
Sunday 7th May 2023

Join our village event to mark the Coronation of HM King Charles the III.

Come and get involved at Steeple Morden Recreation ground and be part of the celebrations!

The event will start from 3pm where everyone can enjoy an afternoon and evening of entertainment. On stage will be local bands; Means of Escape, Outliers and the fabulous west end singer Natalie Woods!

A bar will be available and hot food on sale plus a Coronation themed Grand Prize Draw.

Save The Date! See You There!



To,
Local residents, family, friends
and four legged furries!

BLUE GRASS FESTIVAL WEEKEND

9 – 11 JUNE

STEEPLE MORDEN RECREATION GROUND

Bluegrass features acoustic stringed instruments and emphasizes the off-beat. Notes are anticipated, in contrast to laid back blues where notes are behind the beat, which creates the higher energy characteristic of bluegrass. In bluegrass, as in some forms of jazz, one or more instruments each takes its turn playing the melody and improvising around it, while the others perform accompaniment; this is especially typified in tunes called breakdowns. This is in contrast to old-time music, in which all instruments play the melody together or one instrument carries the lead throughout while the others provide accompaniment. Breakdowns are often characterized by rapid tempos and unusual instrumental dexterity and sometimes by complex chord changes

Wuthering Heights



'This is My Theatre' return to St. Mary's Church Guilden Morden on Thursday 11th May for a performance of 'Wuthering Heights'. Tickets are available from <https://www.thisismytheatre.com/guilden-morden>.

They return again on Thursday 14th September with 'Much Ado About Nothing', <https://www.thisismytheatre.com/guilden-morden-much-ado>
Wuthering Heights at Guilden Morden | This Is My Theatre/TIMT
[THISISMYTHEATRE.COM](https://www.thisismytheatre.com)
[Wuthering Heights at Guilden Morden | This Is My Theatre/TIMT](#)
[Don't miss this haunting adaptation all will love this Summer!](#)

Ashwell and Bassingbourn Patients Group

NOTES FROM OUR MARCH MEETING

We are now fully staffed in our admin department. We are also in a very good position regarding medical staff. We enjoy the services of 4 permanent GPs plus a regular locum doctor and a Physician's Assistant. In addition, we have 2 Registrars (qualified doctors who are completing their GP training). We also have a nurse and 2 Health Care Assistants. This should be good news concerning appointments and is reassuring in these times when health professionals are in such short supply nationally.

We are currently processing the results of our survey about appointments. This produced 369 completed returns which have produced a wealth of data about patient preferences. The next stage will be to produce a commentary and an action plan.

Not surprisingly a major criticism arising from the survey was the telephone system which, as patients and staff agree, is not fit for purpose. However, there have been some technical improvements recently which we hope will enable the queue to move quicker and avoid people being cut off. If patients experience issues with the system please let the surgery know stating your name, phone number, type of incident and date/time so we can pass on specific details to the phone company. In the meantime, we are still awaiting possible news about funding for a new system from the NHS.

A list of Patients' Group representatives is being posted on surgery notice boards.



Contact Names, Numbers and E-Mail Addresses for Organisations and Groups in the Village



Organisation	Contact Name	Phone Number	E-mail
SM Newsletter Editor	Desma Goddard	01763 852287	newsletter@steeplemordenpc.org.uk
First Responders	Nick Badger	01762 852191	nickmbadger@yahoo.co.uk
First Responders (co-ordinator)	Wayne Cox		waynecox79@yahoo.co.uk
Primary School	Tracey How, Head Teacher	01763 852474	office@steeplemorden.cambs.sch.uk
Village College	The Principal Ms Vickey Poulter	01763 242344	office@bassingbournvc.net
SS Peter & Paul Church	Associate. Priest Revd Ann Bol	01223 871058	RevAnn801@gmail.com
GM Cong. Church	Sandy Watkins	01763 852869	sandy@inteserv.co.uk
SM Village Hall Bookings	Diane Knight	01763 853073	viguersk@aol.com
Scouts, Cubs & Beavers	Keith Austin	01763 852023	keith@bogsgap.co.uk
Brownies	Debbie Fisher	01763 852811	debbie-fisher@hotmail.co.uk
Guides	Liz Haigh		steeplemordenguides@gmail.com
Allotment Society	Nettie Traverse- Healey	01763 853843	nettieth@outlook.com
Smarties Pre-School and Out of School Club		01763 852888	smartiesmanager1@gmail.com smrtiesoosclub@gmail.com
Cricket Club	Fraser Daws	01763 853008	fraser.daws@btinternet.com
Football Club	Pete Summers	07709258359	
Morden Magpies Youth FC	Shelley Bainborough	07778181334	dudshell@hotmail.com
Bowls Club (Sec)	Anthony Johnson	07423 436283	williamsj300@outlook.com
Tennis Club	Fiona Coverdale	01763 853325	steeplemordentennis@yahoo.co.uk
Waggon & Horses		01763 853311	
Morden Players	Jenny Elder	01763 852557	jennyelder@sky.com
First Thursday Club	Ann Thorp	01763 852848	annthorp35@icloud.com
Royal British Legion	Patricia Covington	01763 852982	alb@mypostoffice.co.uk
Mobile Wardens Scheme	Geoff Harper Tracy Adams	01763 853845 07841025107	mobilewardenscheme2021@yahoo.com
WI	Joyce Stackhouse	01763 852087	joyce.stackhouse@icloud.com
Neighbourhood Watch			Cambs Police: www.cambs.police.uk
Social Car Scheme	Hazel Smith	01763 852602	hcsmith@clara.co.uk

STEEPLE MORDEN VILLAGE HALL



Steeple Morden Village Hall is available for hiring for Parties, Wedding receptions, club and social activities

*It comprises: Tables, Seating for 120, Bar, Kitchen, Cooker, Fridge, Stage, Parking. There is also limited Crockery & Cutlery
Projector and screen available and Induction Loop Equipment – ask our booking clerk for more details.*

For bookings and prices please contact:

Diane Knight

33 Cheyney Street, Steeple Morden, SG8 0LR

Tel 01763 853073 (please don't phone between the hours of 6 - 7 p.m.)

email: viguersk@aol.com

www.steeplemordenvillagehall.co.uk

Mobile Library

Stops in VILLAGE HALL between 10.15-
11.00am

The next calling date is Tuesday 2nd May 2023



The Village Wheelchair

There is a manual wheelchair available for short term use by anyone in the village. For more information and availability please contact Trish at the Garage Shop

Don't forget you can view this issue and back issues of the Newsletter online; you can also subscribe to receive notification of when the newsletter is available on

www.steeplemordenpc.org.uk

Contributions sent to the editor prior to the newsletter deadline will be printed in the next available edition.

The deadline for June edition is 12 noon on May 17th 2023

Contact details for the editor are at the bottom of the first page of the Newsletter

DESIGN. PRINT. FINISH.
the **PRINTWORKS**



01763 852579
sales@print-works.com

  @makingprintworkforyou